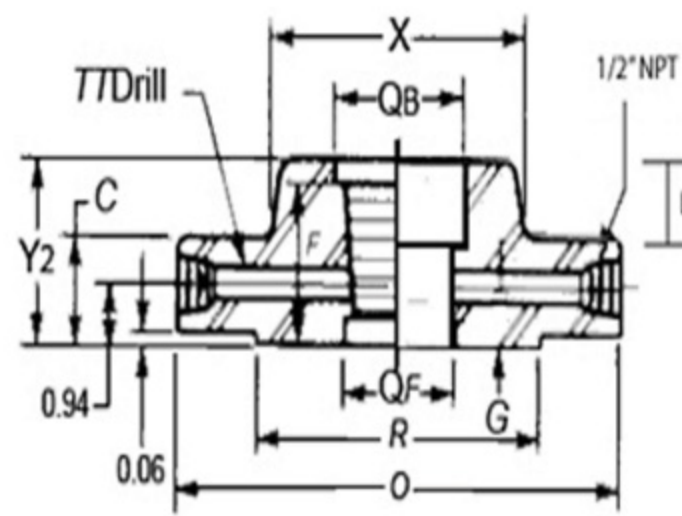
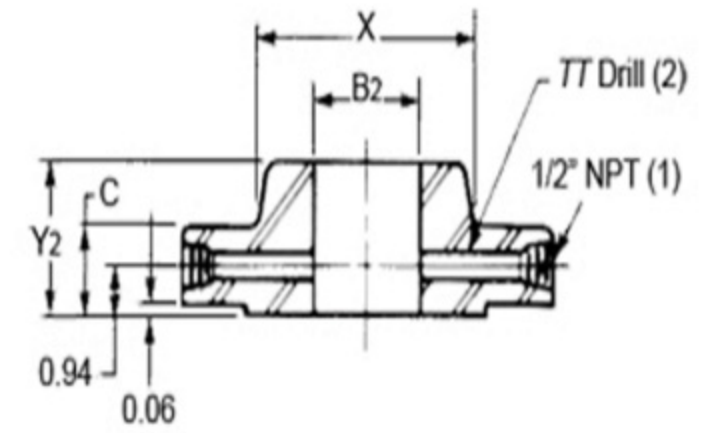


Weld Neck



Threaded and Socket-Weld



Slip-on

Table 1 Class 600 Orifice Flanges, Welding Neck, Slip-On, and Threaded (notes 3, 4)

Nominal Pipe Size	Outside Diameter of Raised Face - R	Outside Diameter of Flange - O	Thickness of Flange, Min. - C	Length Through Hub	Height of Raised Face - H	Ring Type Joint						Diameter of Hub - X	Hub Diameter at Beginning of Chamfer - A	Bore - B	Diameter of Pressure Connection - TT	Drilling Template				Length of Stud Bolts [(4)/(5)]		Depth of Socket - L
						Groove number	Pitch Diameter - P	Groove Depth - E	Groove Width - F	Radius at Bottom - rmax	Special Oval Ring Height - W					Bolt Circle	Number of Holes	Diameter of Holes		Diameter of Bolts	Raised Face	
1/2"	1.375	3.750	1.50	1.812	3.000	R11	0.84	0.93	0.622	1.562	0.78	0.88	-	1/8	2.625	4	0.625	1/2	4.50	5.00	-	1/2
3/4"	1.875	4.625	1.50	1.875	3.125	R13	1.05	1.14	1.00	1.500	0.71	1.09	-	1/8	3.250	4	0.75	5/8	4.50	5.00	-	1/2
1"	2.00	4.88	1.44	3.19	0.06	R16	2.000	0.250	0.344	0.03	1.00	2.12	1.32	1/4	3.50	4	0.69	0.75	5/8	5.00	5.50	1/2
1-1/2"	2.88	6.12	1.44	3.32	0.06	R20	2.688	0.250	0.344	0.03	1.00	2.75	1.90	1/4	4.50	4	0.81	0.88	3/4	5.25	5.50	5/8
2"	3.62	6.50	1.44	3.32	0.06	R23	3.250	0.312	0.469	0.03	1.06	3.31	2.38	1/4	5.00	8	0.69	0.75	5/8	5.00	5.50	1-1/16
2-1/2"	4.12	7.50	1.44	3.44	0.06	R26	4.000	0.312	0.469	0.03	1.06	3.94	2.88	1/4	5.88	8	0.81	0.88	3/4	5.25	5.75	3/4
3"	5.00	8.25	1.44	3.44	0.06	R31	4.875	0.312	0.469	0.03	1.06	4.62	3.50	3/8	6.62	8	0.81	0.88	3/4	5.25	5.75	13/16
4"	6.19	10.75	1.50	4.00	0.25	R37	5.875	0.312	0.469	0.03	1.06	6.00	4.50	1/2	8.50	8	1.00	1.00	7/8	6.00	6.50	15/16
6"	8.50	14.00	1.88	4.62	0.25	R45	8.312	0.312	0.469	0.03	1.06	8.75	6.63	1/2	11.50	12	1.12	1.12	1	7.00	7.50	-
8"	10.62	16.50	2.19	5.25	0.25	R49	10.625	0.312	0.469	0.03	1.06	10.75	8.63	1/2	13.75	12	1.25	1.25	1-1/8	7.75	8.25	-
10"	12.75	20.00	2.50	6.00	0.25	R53	12.750	0.312	0.469	0.03	1.06	13.50	10.75	1/2	17.00	16	1.38	1.38	1-1/4	8.75	9.25	-
12"	15.00	22.00	2.62	6.12	0.25	R57	15.000	0.312	0.469	0.03	1.06	15.75	12.75	1/2	19.25	20	1.38	1.38	1-1/4	9.00	9.50	-
14"	16.25	23.75	2.75	6.50	0.25	R61	16.500	0.312	0.469	0.03	1.06	17.00	14.00	1/2	20.75	20	1.50	1.50	1-3/8	9.50	10.00	-
16"	18.50	27.00	3.00	7.00	0.25	R65	18.500	0.312	0.469	0.03	1.19	19.50	16.00	1/2	23.75	20	1.62	1.62	1-1/2	10.25	10.75	-
18"	21.00	29.25	3.25	7.25	0.25	R69	21.000	0.312	0.469	0.03	1.19	21.50	18.00	1/2	25.75	20	1.62	1.62	1-5/8	11.00	11.50	-
20"	23.00	32.00	3.50	7.50	0.25	R73	23.000	0.375	0.531	0.06	1.25	24.00	20.00	1/2	28.50	24	1.75	1.75	1-5/8	11.75	12.50	-
24"	27.25	37.00	4.00	8.00	0.25	R77	27.250	0.438	0.656	0.06	1.44	28.25	24.00	1/2	33.00	24	2.00	2.00	1-7/8	13.25	13.75	-

See Note (7).

Notes:

- Other NPT sizes may be furnished if required.
- Weld neck flanges NPS 3 and smaller are identical to Class 300 flanges and may be so marked.
- All other dimensions are in accordance with ASME B16.5.
- Bolt lengths include allowance for orifice and gasket thickness of 0.25 in. for NPS 1 - 12 and 0.38 in. for NPS 14 - 24. Bolt lengths for ring type joint flanges include allowance of 0.62 in. for NPS 1 - 10, 0.75 in. for NPS 12 - 18, and 0.88 in. for NPS 20.
- In conformance with ASME B16.5, stud bolt lengths do not include point heights.
- Bore is to be specified by the purchaser.
- Ring joint flange in NPS 24 will require an angular meter tap as shown in Fig. 3.

EBG Flow Products Division

301 Red Bud Trail, West Lake Hills, TX. 78746
 ph. 800-426-9156 fax. 800-435-6629

www.ebgflow.com

