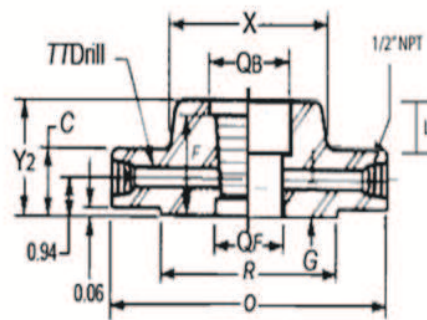
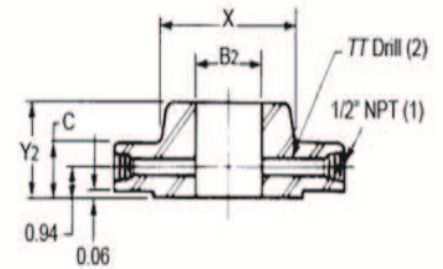


Weld Neck



Threaded and Socket-Weld



Slip-on

Table 1 Class 300 Orifice Flanges, Welding Neck, Slip-On, and Threaded (notes 3, 4)

Nominal Pipe Size	Outside Diameter of Raised Face - R	Outside Diameter of Flange - O	Thickness of Flange, Min. - C	Length Through Hub		Diameter of Hub - X	Hub Diameter Beginning of Chamfer (W.N.) - A	Diameter of Counterbore		Counterbore Depth (From Face)		Bore		Diameter of Pressure Connection - TT	Drilling Template				Bolt Length [(5), (6)]		Depth of Socket - L
				Slip-On and Threaded Y2	Weld Neck Y1			Back QB	Face Qf	F	G	Slip-On B2	Weld Neck B1		Bolt Circle	Number of Holes	Diameter of Holes	Diameter of Bolts	Machine Bolts	Stud Bolts	
1/2"	1.375	3.750	1.50	1.812	3.000	1.50	0.84	0.93	0.622	1.562	0.78	0.88	1/8	2.625	4	0.625	1/2	4.50	5.00	1/2	
3/4"	1.875	4.625	1.50	1.875	3.125	1.875	1.05	1.14	1.00	1.500	0.71	1.09	1/8	3.250	4	0.75	5/8	4.50	5.00	1/2	
1"	2.00	4.88	1.50	1.88	3.25	2.12	1.32	1.41	1.30	1.44	0.75	1.36	1/4	3.50	4	0.69	5/8	4.50	5.00	1/2	
1-1/2"	2.88	6.12	1.50	1.88	3.38	2.75	1.90	1.99	1.89	1.47	0.72	1.95	1/4	4.50	4	0.81	3/4	4.75	5.25	5/8	
2"	3.62	6.50	1.50	1.94	3.38	3.31	2.38	2.50	2.36	1.50	0.69	2.44	1/4	5.00	8	0.69	5/8	4.50	5.00	1-1/16	
2-1/2"	4.12	7.50	1.50	2.00	3.50	3.94	2.88	3.00	2.84	1.75	0.56	2.94	1/4	5.88	8	0.81	3/4	4.75	5.25	3/4	
3"	5.00	8.25	1.50	2.06	3.50	4.62	3.50	3.63	3.46	1.81	0.56	3.57	3/8	6.62	8	0.81	3/4	4.75	5.25	13/16	
4"	6.19	10.00	1.50	2.12	3.62	5.75	4.50	4.63	4.45	1.88	0.56	4.57	1/2	7.88	8	0.81	3/4	4.75	5.25	15/16	
6"	8.50	12.50	1.50	2.12	3.94	8.12	6.63	6.75	6.57	1.88	0.31	6.72	1/2	10.62	12	0.88	3/4	4.75	5.25	-	
8"	10.62	15.00	1.62	2.44	4.38	10.25	8.63	8.75	8.55	2.19	0.44	8.72	1/2	13.00	12	1.00	7/8	5.00	5.75	-	
10"	12.75	17.50	1.88	2.62	4.62	12.62	10.75	See Note (8).				10.88	1/2	15.25	16	1.12	1	5.75	6.50	-	
12"	15.00	20.50	2.00	2.88	5.12	14.75	12.75					12.88	1/2	17.75	16	1.25	1-1/8	6.25	7.00	-	
14"	16.25	23.00	2.12	3.00	5.62	16.75	14.00					14.14	1/2	20.25	20	1.25	1-1/8	6.50	7.25	-	
16"	18.50	25.50	2.25	3.25	5.75	19.00	16.00					16.16	1/2	22.50	20	1.38	1-1/4	7.00	7.75	-	
18"	21.00	28.00	2.38	3.50	6.25	21.00	18.00					18.18	1/2	24.75	24	1.38	1-1/4	7.50	8.50	-	
20"	23.00	30.50	2.50	3.75	6.38	23.12	20.00					20.20	1/2	27.00	24	1.38	1-1/4	7.50	8.50	-	
24"	27.25	36.00	2.75	4.19	6.62	27.62	24.00					24.25	1/2	32.00	24	1.62	1-1/2	8.25	9.50	-	

See Note (7).

See Note (8).

Notes:

- Other NPT sizes may be furnished if required.
- Weld neck flanges NPS 3 and smaller are identical to Class 300 flanges and may be so marked.
- All other dimensions are in accordance with ASME B16.5.
- Bolt lengths include allowance for orifice and gasket thickness of 0.25 in. for NPS 1 - 12 and 0.35 in. for NPS 14 - 24. Bolt lengths for ring type joint flanges include allowance of 0.62 in. for NPS 1 - 10, 0.75 in. for NPS 12 - 18, and 0.88 in. for NP@ 20.
- In conformance with ASME B16.5, stud bolt lengths do not include point heights.
- Bore is to be specified by the purchaser.
- Ring joint flange in NPS 24 will require an angular meter tap as shown in Fig. 3.

EBG Flow Products Division

ph. 800-426-9156 fax. 800-435-6629

www.ebgflow.com

